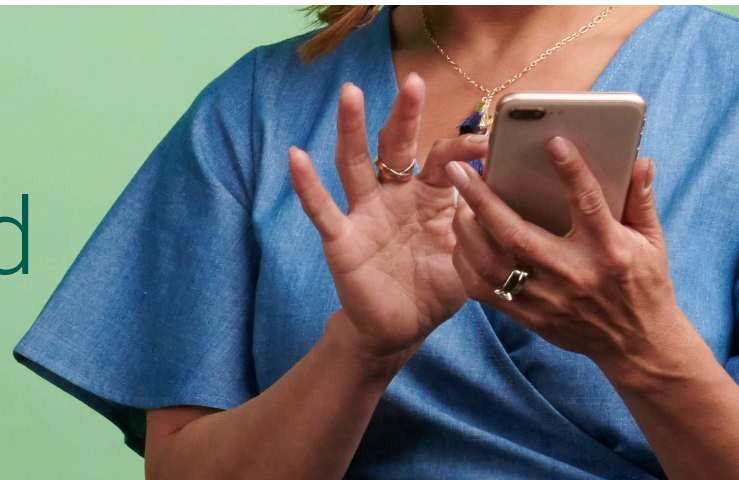



Know your costs. Save on care. And get rewarded.



It's smart, and easy, with Priority Health.

Three things happen every time you use Cost Estimator to shop procedures, lab tests or office visits.

- 1 | You see your costs before you receive care.**
Before you schedule your next appointment, search for the medical service you need in Cost Estimator. Here's how:
 - Enter a procedure name and search for locations where that service is available.
 - Compare costs at those facilities in your network.
 - In some cases you can narrow your search by selecting a specific provider.
 - From the location pricing list, select a facility to see your personal out of pocket estimate.
- 2 | You save on procedures by choosing the best value options.**
Cost Estimator has saved over \$13 million in health care costs since it launched just four years ago.
- 3 | You may qualify to earn a Visa rewards card of \$50 to \$200.**
That's right. Many common procedures and tests are included in our Priority Rewards program, where we'll send you a reward for being a smart shopper. Here's how:
 - In your Cost Estimator search, choose a procedure or facility with a green trophy beside it. It looks like this: 
 - Receive that medical service at that facility within six months of your search.
 - Wait about three weeks for your Visa rewards card in the mail.
 - Use it for all kinds of items including medical services, health and wellness services, groceries and more.

Here's a breakdown of qualifying procedures that earn you a Visa rewards card.

| Procedure type | Procedure | Reward |
|----------------|---|--------|
| Bone and joint | Carpal tunnel surgery | \$100 |
| Bone and joint | Anterior cruciate ligament knee surgery (ACL) | \$200 |
| Bone and joint | Arthroscopic rotator cuff repair | \$200 |
| Bone and joint | Knee arthroscopy | \$200 |
| Bone and joint | Shoulder arthroscopy | \$200 |
| Bone and joint | Total hip replacement (inpatient/outpatient) | \$200 |
| Bone and joint | Total knee replacement (inpatient/outpatient) | \$200 |
| Cardiac | Doppler exam of the heart | \$100 |
| Cardiac | Heart echo imaging | \$100 |
| Cardiac | Heart perfusion imaging | \$100 |
| Diagnostic | Colonoscopy (with and without biopsy) | \$100 |
| Diagnostic | Upper GI endoscopy (with and without biopsy) | \$100 |
| Diagnostic | Sleep study | \$100 |
| Diagnostic | Cystoscopy | \$200 |
| Imaging | Most CTs | \$50 |
| Imaging | Most MRIs | \$100 |
| Outpatient | Nose plastic surgery (Rhinoplasty) | \$100 |
| Outpatient | Nasal septum repair | \$200 |
| Outpatient | Remove tonsils and adenoids | \$200 |
| Outpatient | Ear tubes | \$200 |
| Outpatient | Cataract surgery | \$200 |
| Outpatient | Laparoscopic cholecystectomy | \$200 |
| Outpatient | Lithotripsy | \$200 |
| Women's health | Cesarean section delivery | \$200 |
| Women's health | Vaginal delivery | \$200 |
| Women's health | Hysteroscopy | \$200 |
| Women's health | Breast biopsy | \$200 |
| Women's health | Laparoscopy, excise lesions | \$200 |



You can also use Cost Estimator to price your prescription medications.

- Before visiting the pharmacy, search for your prescription.
- Get price estimates at local pharmacies as well as mail order options.
- *Bonus: If Cost Estimator finds a preferred generic drug available to you, it'll alert you. Talk to your doctor about these generics because they often save you money.*

Next time you need a medical service, remember to use Cost Estimator—it can save, and earn, you money. If you have any questions about Cost Estimator or PriorityRewards, call the number on the back of your member ID card.

Priority Health complies with applicable Federal civil rights laws and does not discriminate on the basis of race, color, national origin, age, disability, or sex.

ATENCIÓN: si habla español, tiene a su disposición servicios gratuitos de asistencia en su idioma. Consulte al número de Servicio al Cliente que está en la parte de atrás de su tarjeta de identificación de miembro. (TTY: 711).

ملاحظة: إذا كنت تتحدث العربية، فإن خدمات المساعدة اللغوية تتوافر لك بالمجان. يرجى الاتصال برقم خدمة العملاء على الجانب الخلفي من بطاقة عضويتك الشخصية. (رقم هاتف الصم والبكم: 711).